

# Valves and Solenoid valves Series 9

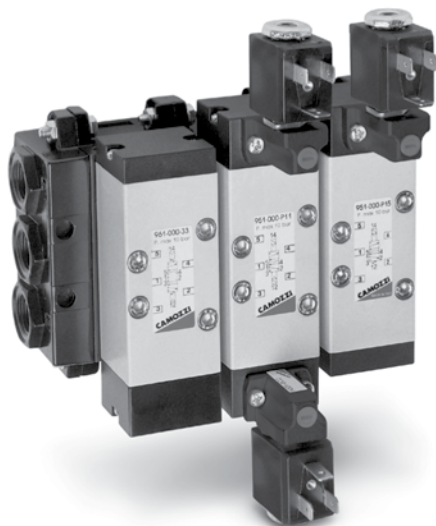
5/2 and 5/3 way CC CO

Sizes 1 - 2 - 3

According to the standard ISO 5599/1

2

CONTROL



The Series 9 electropneumatically or pneumatically operated valves have been manufactured in the sizes 1, 2 and 3, as recommended by the ISO Standards.

The ease of pneumatic and electrical wiring makes this valves series extremely flexible.

## GENERAL DATA

<b>Operating pressure</b>	max. press. 10 bar (for minimum pressures see descriptions)
<b>Nominal pressure</b>	6 bar
<b>Nominal flow</b>	ISO 1= 900 NI/min ISO 2 = 1610 NI/min ISO 3 = 4350 NI/min
<b>Operating temperature</b>	0 ÷ 60°C (with dry air at -20°C)
<b>Fluid</b>	filtered air, without lubrication. If lubricated air is used, it is recommended to use ISOVG32 oil and to never interrupt the lubrication.
<b>Interface electropneumatic</b>	CNOMO Standards

## CODING EXAMPLE

9	5	1	-	C	1	B	-	P16	-	23	-	U	7	7
---	---	---	---	---	---	---	---	-----	---	----	---	---	---	---

<b>9</b>	SERIES
<b>5</b>	NO OF WAYS/POSITIONS: 5 = 5/2 6 = 5/3 Closed Centres 7 = 5/3 Open Centres
<b>1</b>	SIZE: 1 = size 1 2 = size 2 3 = size 3
<b>C</b>	SUB-BASE: C = ISO (manifold outlets) F = ISO (single sub-base, side ports) G = ISO (single sub-base, rear ports) N = ISO (front outlet interface) N1A = (front outlet sub - base )
<b>1</b>	PORTS (OUTLETS): Size 1 = G1/4 Size 2 = G3/8 Size 3 = G1/2
<b>B</b>	N° OF SUB-BASE: A = 1 *B = 2 *C = 3 *D = 4 *E = 5 *F = 6 *G = 7 *H = 8 *K = 9 *L = 10 *M = 11 *N = 12 *P = 13 *R = 14 *S = 15
<b>P 16</b>	ACTUATION: 33 = pneumatic, pneumatic return 34 = pneumatic, differential pneumatic return 35 = pneumatic, mechanical spring return P11 = double solenoid (horizontal solenoids) P15 = single solenoid, spring return (horizontal solenoids) P16 = solenoid, pneumatic spring return (horizontal solenoids)
<b>23</b>	SOLENOID INTERFACE: 23 = A531 - BC2
<b>U</b>	SOLENOID MATERIAL: U = PET G = PA A8 = PPS H8 = PA 6 VO
<b>7</b>	SOLENOID DIMENSIONS: 7 = 22 x 22 8 = 30 x 30 9 = 22 x 58
<b>7</b>	SOLENOID VOLTAGE: See solenoids page 2.2.35.01

\* Complete with two end - blocks Mod. 900-H or 900-HN.

2

CONTROL

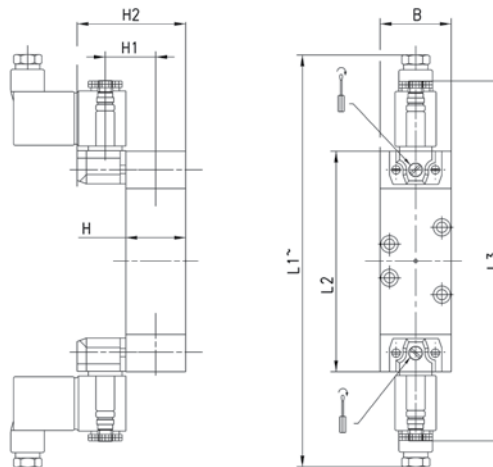
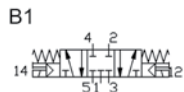
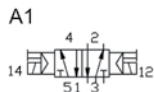
## 5/2-way, 5/3-way valves, ISO 1, ISO 2, ISO 3, bistable



The Series 9 solenoid valves which have an ISO interface, size 1, 2 and 3, and which have electropneumatic actuation and return are suitable for mounting on a sub-base.

For electrical actuation, 2 types of solenoid, Mod. A70 and Mod. A80, are available with a wide range of voltages and power consumptions.

The following is supplied:  
1x interface seal  
4x fixing screws.



### DIMENSIONS

Mod.	Size ISO	B	L1	L2	L3	H	H1	H2	Min. operating pressure	Symbol
<b>951-000-P11-23</b>	1	38	208	118	194	32	43	58	2,5	A1
<b>952-000-P11-23</b>	2	51	228	138	214	33	44	59	2,5	A1
<b>953-000-P11-23</b>	3	65	273	183	259	45	56	71	2,5	A1
<b>961-000-P11-23</b>	1	38	208	118	194	32	43	58	2,5	B1
<b>962-000-P11-23</b>	2	51	228	138	214	33	44	59	2,5	B1
<b>963-000-P11-23</b>	3	65	273	183	259	45	56	71	2,5	B1
<b>971-000-P11-23</b>	1	38	208	118	194	32	43	58	2,5	C1
<b>972-000-P11-23</b>	2	51	228	138	214	33	44	59	2,5	C1
<b>973-000-P11-23</b>	3	65	273	183	259	45	56	71	2,5	C1