

# Valves and Solenoid valves Series 3

2x3/2, 3/2, 5/2 and 5/3 ways CC CO CP  
Ports G1/8 and G1/4



The G1/8 and G1/4 Series 3 solenoid valves have been designed with 3/2, 2 x 3/2, 5/2, 5/3 in two main versions which are:

- Electropneumatically actuated with mechanical spring return
- Electropneumatically actuated with external and internal air pressure supply

The Series 3 is equipped with a manual override which allows a stable operation.

The Series 3 valves can be operated by Series U or G solenoids (22x22).

## GENERAL DATA

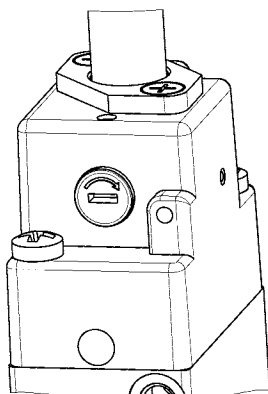
<b>Construction</b>	spool - type
<b>Valve group</b>	2x3/2 - 3/2 - 5/2 - 5/3 way CC CO CP
<b>Materials</b>	AL body, stainless steel spool, NBR seals
<b>Ports</b>	G1/8 - G1/4
<b>Installation</b>	in any position
<b>Operating temperature</b>	0 + 60°C (with dry air at -20°C)
<b>Operating pressure</b>	see tables
<b>Fluid</b>	filtered air, without lubrication. If lubricated air is used, it is recommended to use ISOVG32 oil. Once applied the lubrication should never be interrupted.

**CODING EXAMPLE**

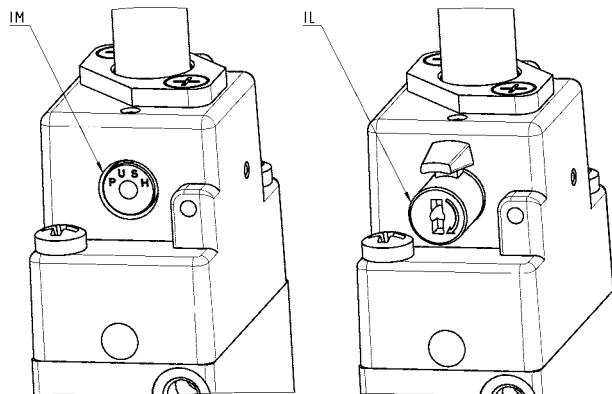
<b>3</b>	<b>3</b>	<b>8</b>	<b>D</b>	<b>-</b>	<b>015</b>	<b>-</b>	<b>02</b>	<b>-</b>	<b>U</b>	<b>7</b>	<b>7</b>
<b>3</b>	SERIES										
<b>3</b>	N° OF PORTS/POSITIONS: 3 = 3/2 NC 4 = 3/2 NO 5 = 5/2 6 = 5/3 C. closed 7 = 5/3 C. open 8 = 5/3 C. pressure 9 = 1x 3/2 NC + 1x-3/2 NO										
<b>8</b>	PORTS: 8 = G1/8 4 = G1/4										
<b>D</b>	D = double valve 2x3/2 L = for manifold assembly (only for 3/2 G1/8)										
<b>015</b>	ACTUATION: 011 = double solenoid 015 = single solenoid, spring return 016 = single solenoid, pneumatic spring return E11 = double solenoid external servo-command E15 = single solenoid, external servo-command 033 = pneumatic pneumatic 035 = pneumatic spring										
<b>22</b>	SOLENOID INTERFACE: 02 = mech. sol. 22 x 22										
<b>U</b>	SOLENOID MATERIAL: U = PET G = PA A8 = PPS H8 = PA 6 V0 A7 = PPS										
<b>7</b>	SOLENOID DIMENSIONS: 7 = 22 x 22 8 = 30 x 30										
<b>7</b>	SOLENOID VOLTAGE: See page solenoids 2.2.35.01										
	TYPE OF MANUAL OVERRIDE: = bistable, standard IL = bistable, lever type(available on demand) IM = monostable (available on demand)										

**TYPES OF MANUAL OVERRIDE**

New



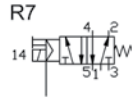
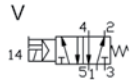
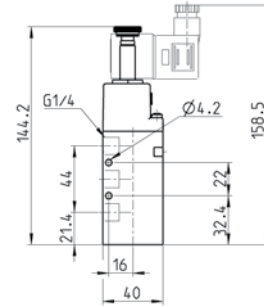
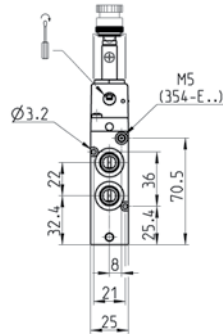
Example of solenoid valve with a bistable standard manual override.



Example of solenoid monostable valve (IM) and bistable valve with a lever type manual override (IL). Both versions are available on demand. To order them it is necessary to add IM or IL at the end of the code. Code ex.: 454-015-22-U771L.

## 5/2-way solenoid valve, G1/4, monostable Mod. 354...

The Series 3, G1/4 5/2-way solenoid valves, which have electropneumatic actuation and spring return, are suitable for operating double-acting cylinders.



Mod.	Function	Flow rate NI/min	Operating pressure (bar)	Pilot pressure (bar)	Symbol
354-015-02	5/2	1300	2,5 ÷ 10	-	V
354-E15-02	5/2	1300	-0,9 ÷ 10	2,5 ÷ 10	R7